



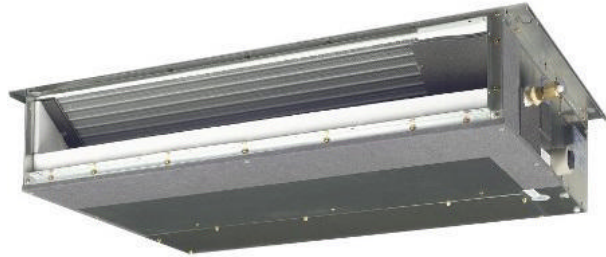
## Submittal Data Sheet

1.5-Ton Slim Duct Built-in Concealed Ceiling Unit

FXDQ18MVJU

### FEATURES

- The slim height, at only 7-7/8", makes it suitable for most of the applications where attic / bulkhead space is limited
- With a sound level as low as 31 dBA, these systems are among the quietest on the market
- Washable filter included
- Integral condensate pump with up to 23-5/8" lift
- Blends unobtrusively with any interior decor, only the suction and discharge grills are visible
- Standard Limited Warranty: 10-year warranty on compressor and all parts



**VRV**





## Submittal Data Sheet

1.5-Ton Slim Duct Built-in Concealed Ceiling Unit

FXDQ18MVJU

### PERFORMANCE

Indoor Unit Model No.	FXDQ18MVJU	Indoor Unit Name:	1.5-Ton Slim Duct Built-in Concealed Ceiling Unit
Type:	Ducted	Rated Cooling Conditions:	Indoor (°F DB/WB): 80 / 67 Ambient (°F DB/WB): 95 / 75
Rated Cooling Capacity (Btu/hr):	18,000	Rated Heating Conditions:	Indoor (°F DB/WB): 70 / 60 Ambient (°F DB/WB): 47 / 43
Sensible Capacity (Btu/hr):	12,900	Rated Piping Length(ft):	
Cooling Input Power (kW):	0.190	Rated Height Separation (ft):	
Rated Heating Capacity (Btu/hr):	20,000		
Heating Input Power (kW):	0.17		

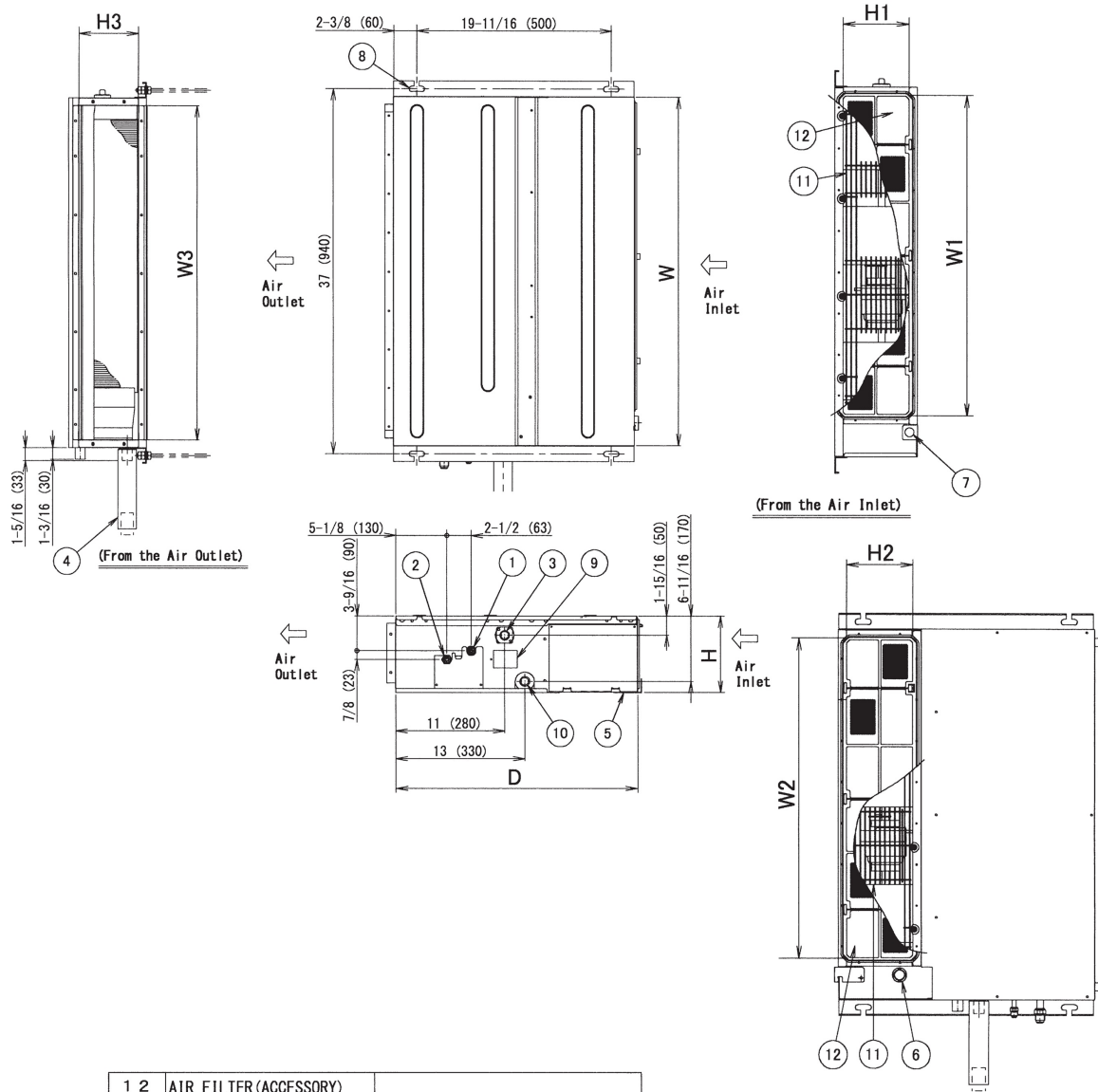
### INDOOR UNIT DETAILS

Power Supply (V/Hz/Ph):	208-230 / 60 / 1	Airflow Rate (H/L) (CFM):	440/350
Power Supply Connections:	L1, L2, Ground	Moisture Removal (Gal/hr):	
Min. Circuit Amps MCA (A):	1.3	Gas Pipe Connection (inch):	1/2
Max Overcurrent Protection (MOP) (A):	15	Liquid Pipe Connection (inch):	1/4
Dimensions (HxWxD) (in):	7-7/8 x 35-7/16 x 24-7/16	Condensate Connection (inch):	1-1/32
Net Weight (lb):	63	Sound Pressure (H/L) (dBA):	35/31
Ext. Static Pressure (Rated/Max) (inWg):	0.17" / 0.17"	Sound Power Level (dBA):	

# Submittal Data Sheet

1.5-Ton Slim Duct Built-in Concealed Ceiling Unit  
FXDQ18MVJU

## DIMENSIONAL DRAWING



1 2	AIR FILTER (ACCESSORY)	
1 1	PROTECTION NET	
1 0	SOCKET FOR DRAIN	
9	INSPECTION DOOR	
8	SUSPENSION BRACKET	
7	POWER SUPPLY CONNECTION	
6	TRANSMISSION WIRING CONNECTION	
5	CONTROL BOX	
4	DRAIN HOSE (ACCESSORY)	I. D. $\phi$ 31/32 (OUTLET)
3	DRAIN PIPE CONNECTION	VP20 (O. D. $\phi$ 1-1/32 / I. D. $\phi$ 25/32)
2	GAS PIPE CONNECTION	$\phi$ 1/2 (FLARE CONNECTION)
1	LIQUID PIPE CONNECTION	$\phi$ 1/4 (FLARE CONNECTION)
ITEM	PART NAME	REMARK

H	7-7/8 (200)
W	35-7/16 (900)
D	24-7/16 (620)
Air Inlet (Side)	H1 6-5/16 (160)
	W1 30-11/16 (780)
Air Inlet (Bottom)	H2 6-5/16 (160)
	W2 30-11/16 (780)
Air Outlet	H3 6 (153)
	W3 33-7/8 (860)

Note: For additional dimensional data and clearance information, refer to Engineering Data