



## MULTI-POSITION, VARIABLE-SPEED, ECM-BASED AIR HANDLER WITH INTERNAL EEV COMMUNICATING 2 TO 5 TONS

### ■ Contents

Nomenclature .....	2
Product Specifications .....	3
Dimensions .....	4
Airflow Data .....	5
Heat Kit Data .....	6
Wiring Diagram .....	8
Accessories .....	9

### ■ Product Features

- Electronic Expansion Valve (EEV) for cooling and heat pump applications.
- Variable-speed ECM blower motor
- Compatible with Daikin *One+* smart thermostat and other Daikin communicating equipment
- Provides constant CFM over a wide range of static pressure conditions independent of duct system
- CFM indicator
- Thermostat provides adjustable low CFM for efficient fan-only operation
- All-aluminum evaporator coil
- Fault recall of six most recent faults
- Improved humidity and comfort control
- AHRI certified; ETL listed
- Coil mounting track for quick repositioning
- Rigid SmartFrame™ cabinet
- Coil mounting track for quick repositioning
- UL 60335 2-40 Compliant

### ■ Cabinet Features

- Cabinet air leakage less than 2.0% at 1.0 inch H<sub>2</sub>O when tested in accordance with ASHRAE standard 193
- Cabinet air leakage less than 1.4% at 0.5 inch H<sub>2</sub>O when tested in accordance with ASHRAE standard 193
- 3 kW – 25 kW electric heater kits
- Horizontal or vertical configuration capabilities
- 21" depth for easier attic access
- DecaBDE-free thermoplastic drain pan with secondary drain connections
- Screw-less sides and back helps to reduce condensation when installed in humid locations
- Foil-faced insulation covers the internal casing to reduce cabinet condensation
- Galvanized, leather grain-embossed finish
- Glue-less cabinet insulation retention
- Tool-less filter access



\* Complete warranty details available from your local dealer or at [www.daikincomfort.com](http://www.daikincomfort.com). To receive the 12-Year Parts Limited Warranty, online registration must be completed within 60 days of installation. Additional requirements for annual maintenance are required for the Unit Replacement Limited Warranty. Online registration and some of the additional requirements are not required in California or Québec. The duration of warranty coverage in Texas and Florida differs in some cases.

	D	M	V	E	2,4	B	P	1	4	00	B	A	
	1	2	3	4	5,6	7	8	9	10	11,12	13	14	
<b>MINOR REVISION</b>													
<b>BRAND</b>													
A - CORPORATE AIR HANDLER													
D - DAIKIN AIR HANDLER													
<b>MAJOR REVISION</b>													
<b>APPLICATION</b>													
C - CEILING MOUNTED													
M - MULTI-POSITIONAL													
W - WALL MOUNTED													
F - FIT COMPATIBLE MULTI-POSITIONAL													
H - HORIZONTAL DISCHARGE COMPATIBLE													
MULTI-POSITIONAL													
<b>FACTORY INSTALLED ELECTRIC HEAT KW</b>													
00 -NO ELECTRIC HEAT													
<b>REFRIGERANT</b>													
3 - R32													
4 - R4 10A													
6 R410A or R22													
<b>ELECTRICAL</b>													
1 208/230 V, 1 PHASE, 60 Hz													
<b>CABINET</b>													
N - UNCASED													
P - PAINTED													
U - UNPAINTED													
<b>CABINET WIDTH</b>													
AC* Series													
M - 43.25"													
L - 49.25"													
AM* Series													
B - 17.5"													
C -21.0"													
D - 24.5"													
AW* Series													
S - 20.2"													
L - 24.0"													
<b>NOMINAL CAPACITY</b>													
12 - 1.0 TON	36 - 3.0 TONS												
18 - 1.5 TONS	42 - 3.5 TONS												
24 - 2.0 TONS	48 - 4.0 TONS												
30 - 2.5 TONS	60 - 5.0 TONS												

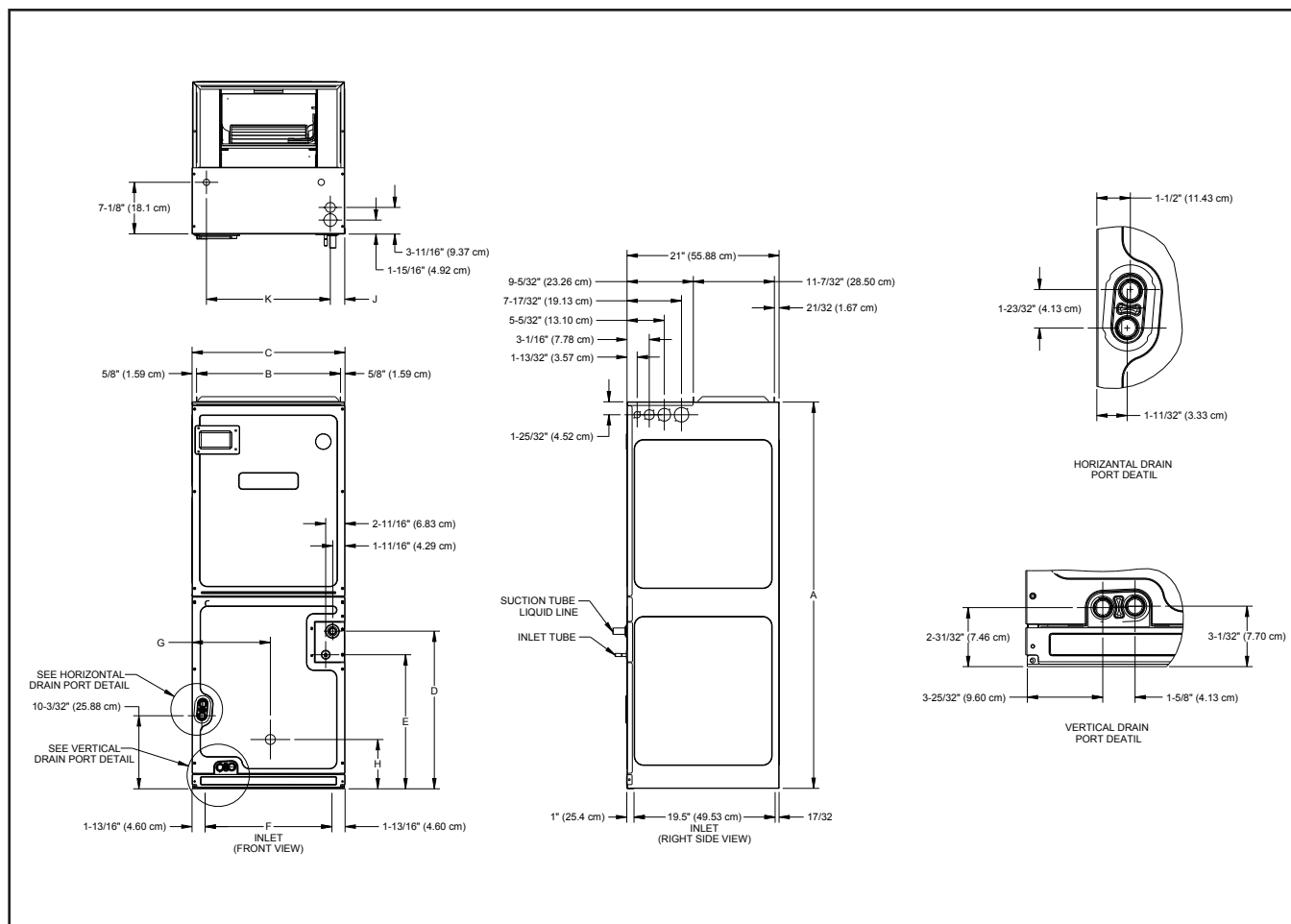
	H	K	T	S	D	2	5	D	1	
	1	2	3	4	5	6	7	8	9	
<b>Unit Type</b>										<b>Electrical</b>
HKT - Electric Heater Kit										A - Single phase 208 V
										B - Single phase 240 V
<b>Service Disconnect</b>										1 - Single phase 208/240 V
D - Service disconnect										3 - Three phase 208/240 V
N - No service disconnect										
										<b>Cabinet Size</b>
										X - All Cabinets
										C - C Cabinet
										D - D Cabinet
										<b>Heating Capacity @ 240 V</b>
										3 3.0 0 kW
										10 9.6 kW
										5 5.00 kW
										15 14.4.00 kW
										6 6.00 kW
										19 19.2 kW with 170°F limit
										8 8.00 kW
										20 19.2 kW with 160°F limit
										25 24.0 kW

**Note: 20X3 = 18.0 kW with 160°F limit**

	DMVE24BP 1400	DMVE36CP 1400	DMVE48DP 1400	DMVE60DP 1400
<b>NOMINAL RATINGS</b>				
Cooling (BTU/h)	24,000	36,000	48,000	60,000
<b>BLOWER</b>				
Diameter	10 $\frac{5}{8}$ "	10 $\frac{5}{8}$ "	11 $\frac{5}{8}$ "	11 $\frac{5}{8}$ "
Width	6"	10 $\frac{5}{8}$ "	10 $\frac{5}{8}$ "	10 $\frac{5}{8}$ "
<b>COIL CONNECTIONS</b>				
Liquid	$\frac{3}{8}$ "	$\frac{3}{8}$ "	$\frac{3}{8}$ "	$\frac{3}{8}$ "
Suction	$\frac{3}{4}$ "	$\frac{7}{8}$ "	$\frac{7}{8}$ "	$\frac{7}{8}$ "
Coil Drain Connection (FPT)	$\frac{3}{4}$ "	$\frac{3}{4}$ "	$\frac{3}{4}$ "	$\frac{3}{4}$ "
<b>ELECTRICAL DATA</b>				
Voltage	208/240	208/240	208/240	208/240
Electric Heat Capacity (kW)	3, 5, 6, 8, 10	5, 6, 8, 10, 15, 19	5, 6, 8, 10, 15, 20	5, 6, 8, 10, 15, 20, 25
Min Circuit Ampacity	4.9/4.9	6.5/6.5	8.6/8.6	8.6/8.6
Max. Overcurrent Device (Amps)	15/15	15/15	15/15	15/15
Minimum VAC	197	197	197	197
Maximum VAC	253	253	253	253
<b>BLOWER MOTOR</b>				
Full Load Amps (FLA)	3.9	5.2	6.9	6.9
Horsepower (HP)	$\frac{1}{2}$	$\frac{3}{4}$	1	1
<b>SHIP WEIGHT (LBS.)</b>	115	140	150	167

**NOTE:** Minimum Circuit Ampacity (MCA) and Maximum Overcurrent Protection (MOP) for blower without supplemental heat installed. Refer to unit nameplate and/or Heat Kit Data for specification with approved accessory heaters installed.

## DIMENSIONS



MODEL	A	B	C	D	E	F	G	H
DMVE24BP1400	53 <sup>7</sup> / <sub>16</sub>	16 <sup>3</sup> / <sub>8</sub>	17 <sup>1</sup> / <sub>2</sub>	20	21 <sup>1</sup> / <sub>2</sub>	14 <sup>1</sup> / <sub>8</sub>	9 <sup>1</sup> / <sub>8</sub>	7 <sup>1</sup> / <sub>8</sub>
DMVE36CP1400	53 <sup>7</sup> / <sub>16</sub>	19 <sup>1</sup> / <sub>8</sub>	21	21 <sup>13</sup> / <sub>16</sub>	18 <sup>1</sup> / <sub>8</sub>	17 <sup>11</sup> / <sub>16</sub>	10 <sup>13</sup> / <sub>16</sub>	6 <sup>13</sup> / <sub>16</sub>
DMVE48DP1400	53 <sup>7</sup> / <sub>16</sub>	23 <sup>5</sup> / <sub>16</sub>	24 <sup>1</sup> / <sub>2</sub>	21 <sup>1</sup> / <sub>2</sub>	18 <sup>5</sup> / <sub>16</sub>	21 <sup>3</sup> / <sub>16</sub>	12 <sup>1</sup> / <sub>8</sub>	6 <sup>1</sup> / <sub>8</sub>
DMVE60DP1400	58	23 <sup>5</sup> / <sub>16</sub>	24 <sup>1</sup> / <sub>2</sub>	26 <sup>1</sup> / <sub>8</sub>	22 <sup>1</sup> / <sub>8</sub>	21 <sup>3</sup> / <sub>16</sub>	12 <sup>5</sup> / <sub>16</sub>	25 <sup>1</sup> / <sub>8</sub>

MODEL	STAGE	RATED AIRFLOW CFM								
		0.1	0.2	0.3	0.4	0.5	0.6	0.7	0.8	0.9
DMVE24BP1400-B*	High	700	690	690	685	680	670	665	660	655
	Low	520	505	495	490	470	455	445	435	425
DMVE36CP1400-B*	High	1190	1170	1165	1160	1145	1130	1120	1105	1100
	Low	820	810	795	785	765	740	730	720	710
DMVE48DP1400-B*	High	1445	1440	1430	1415	1405	1390	1380	1375	1370
	Low	880	875	870	870	860	845	840	835	830
DMVE60DP1400-B*	High	1645	1640	1640	1635	1630	1625	1620	1620	1615
	Low	1080	1075	1070	1070	1060	1055	1050	1050	1045

Note: During cooling operation outdoor will determine the indoor airflow

MODEL	MAXIMUM AIR FLOW CFM								
	0.1	0.2	0.3	0.4	0.5	0.6	0.7	0.8	0.9
DMVE24BP1400-B*	770	760	760	755	750	735	730	725	720
DMVE36CP1400-B*	1310	1285	1280	1275	1260	1245	1230	1215	1210
DMVE36CP1400-B*	1590	1585	1575	1560	1545	1530	1520	1515	1505
DMVE60DP1400-B*	1810	1805	1805	1800	1790	1785	1780	1780	1775

\*The chart is for information only. For satisfactory operation, external static pressure must not exceed 0.5 wc.

\*Unit may provide different SCFM during electrical heater operation. See IO manual for the airflow rate.

## HEAT KIT DATA

MODELS	SERVICE DISCONNECT	CIRCUIT 1 (208V/240V)			CIRCUIT 2 (208V/240V)			SINGLE-POINT KIT (208V/240V)	
		AMPS	MCA <sup>1</sup>	MOP <sup>2</sup>	AMPS	MCA <sup>1</sup>	MOP <sup>2</sup>	MCA <sup>1</sup>	MOP <sup>2</sup>
<b>DMVE24BP1400BA</b>	No Breaker	0.0/0.0	4.9/4.9	15/15	---	---	---	---	---
HKTSN03X1		10.8/12.5	18.4/20.5	20/25	---	---	---	---	---
HKTSN05X1		17.3/20.0	26.5/29.9	30/30	---	---	---	---	---
HKTSN06X1		21.7/25.0	32.0/36.1	35/40	---	---	---	---	---
HKTSN08X1		28.9/33.3	41.0/46.5	45/50	---	---	---	---	---
HKTSN10X1		34.7/40.0	48.2/54.9	50/60	---	---	---	---	---
HKTSN05X1	Breaker	17.3/20.0	26.5/29.9	30/30	---	---	---	---	---
HKTSN08X1		28.9/33.3	41.0/46.5	45/50	---	---	---	---	---
HKTSN10X1		34.7/40.0	48.2/54.9	50/60	---	---	---	---	---
<b>DMVE36CP1400BA</b>	No Breaker	0.0/0.0	6.5/6.5	15/15	---	---	---	---	---
HKTSN05X1		17.3/20.0	28.0/31.5	30/35	---	---	---	---	---
HKTSN06X1		21.7/25.0	34.0/37.8	35/40	---	---	---	---	---
HKTSN08X1		28.9/33.3	42.6/48.2	45/50	---	---	---	---	---
HKTSN10X1		34.7/40.0	49.8/56.5	50/60	---	---	---	---	---
HKTSN15X3 <sup>^</sup>		0.0/0.0	6.5/6.5	15/15	30/34.6	37.5/43	40/45	---	---
HKTSN15XA/B	Breaker	34.7/40.0	49.8/56.5	50/60	17.3/20.0	21.7/25.0	25/25	71.5/81.5	80/90
HKTSN05X1		17.3/20.0	28.0/31.5	30/35	---	---	---	---	---
HKTSN08X1		28.9/33.3	42.6/48.2	45/50	---	---	---	---	---
HKTSN10X1		34.7/40.0	49.8/56.5	50/60	---	---	---	---	---
HKTSN19CA/B		34.7/40.0	49.8/56.5	50/60	34.7/40	43.4/50.0	45/50	93.2/106.5	100/110
<b>DMVE48DP1400BA</b>	No Breaker	0.0/0.0	8.6/8.6	15/15	---	---	---	---	---
HKTSN05X1		17.3	30.3	35	---	---	---	---	---
HKTSN06X1		21.7	36	40	---	---	---	---	---
HKTSN08X1		28.9	45	45	---	---	---	---	---
HKTSN10X1		34.7	52	60	---	---	---	---	---
HKTSN05X1	Breaker	17.3	30.3	35	---	---	---	---	---
HKTSN08X1		28.9	45	45	---	---	---	---	---
HKTSN10X1		34.7	52	60	---	---	---	---	---
HKTSN15X3 <sup>^</sup>		34.7	52	60	17.3	21.7	25	73.6	80
HKTSN15XA/B		34.7	52	60	34.7	43.3	45	95.3	100
HKTSN20DA/B		0.0	8.6	15	30	38	40	---	---
<b>DMVE60DP1400BA</b>	No Breaker	0.0/0.0	8.6/8.6	15/15	---	---	---	---	---
HKTSN05X1		17.3	30.3	35	---	---	---	---	---
HKTSN06X1		21.7	36	40	---	---	---	---	---
HKTSN08X1		28.9	45	45	---	---	---	---	---
HKTSN10X1		34.7	52	60	---	---	---	---	---
HKTSN05X1	Breaker	17.3	30.3	35	---	---	---	---	---
HKTSN08X1		28.9	45	45	---	---	---	---	---
HKTSN10X1		34.7	52	60	---	---	---	---	---
HKTSN15X3 <sup>^</sup>		34.7	52	60	17.3	21.7	25	73.6	80
HKTSN20X3 <sup>^</sup>		34.7	52	60	34.7	43.3	45	95.3	100
HKTSN15XA/B		52	73.6	80	35	43.3	45	117	125
HKTSN20DA/B		0.0	8.6	15	30	38	40	---	---
HKTSN25DA/B		0.0	8.6	15	38	47	50	---	---

<sup>1</sup> Minimum Circuit Ampacity (Heater Amps + Motor Amps) X 1.25

<sup>2</sup> Maximum Overcurrent Protection = 2.25 X Motor Amps + Heater Amps

<sup>3</sup> Notation is correct as XB because technically the 240V heater kit application can be used here without any issues.

<sup>^</sup> Three-phase Heater Kits (Circuit 1: Single-phase for Air Handlers Circuit 2: Three-phase for Heater Kits)

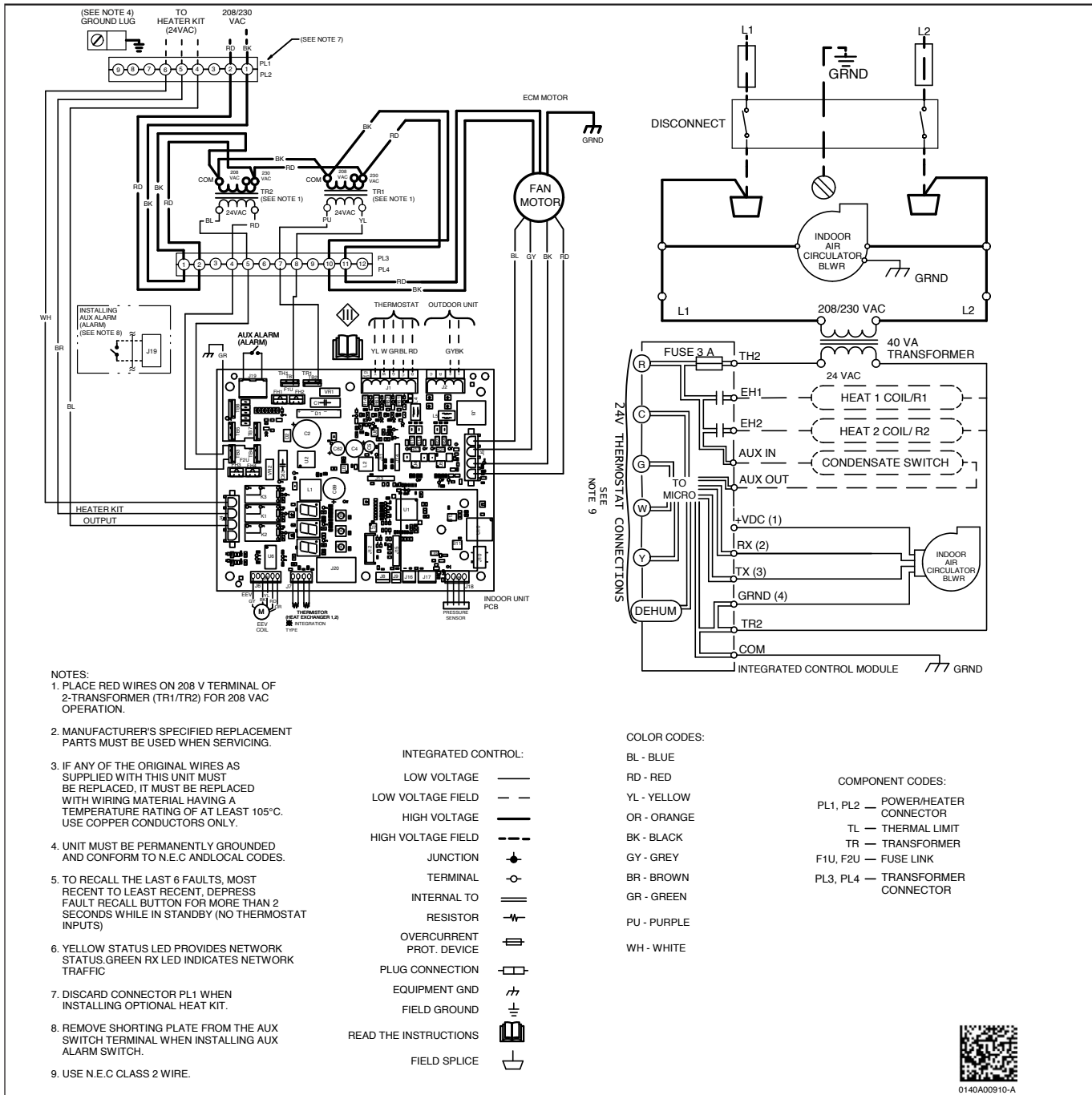
**Note:** The 208 or 240 in the heat kit part number field is for clarification of the nominal voltage for this model.

--- indicates Not Required

### HEATING KW CORRECTION FACTOR

SUPPLY VOLTAGE	240	230	220	210	208
CORRECTION FACTOR	1.00	0.92	0.84	0.77	0.75

Multiply the 240-volt heating capacity by correction factors.



Wiring is subject to change. Always refer to the wiring diagram on the unit for the most up-to-date wiring.

**WARNING**

**High Voltage:** Disconnect all power before servicing or installing this unit. Multiple power sources may be present. Failure to do so may cause property damage, personal injury, or death.

⚡

**DOWNFLOW KITS**

DFK-B	DFK-C	DFK-D
DMVE24BP1400	DMVE36CP1400	DMVE48DP1400
		DMVE60DP1400

**DRAIN PORT PLUG**

Kit Number	Description	Application
DPK1	Side Drain Port Plug	All Models

**CONDENSATE MANAGEMENT KITS\***

CMK0008	CMK0009	CMK0010	CMK0011
DMVE24BP1400	DMVE36CP1400	DMVE48DP1400	DMVE60DP1400

\*For Horizontal application only.

**MERV 15 AIR CLEANERS**

CHASSIS	DAIKIN PREMIUM AIR CLEANER	FILTER SIZE	REPLACEMENT FILTER PART #
B	DV15-2117-AB	21"x17"	0160M00013
C	DV15-2121-AC	21"x21"	0160M00014
D	DV15-2124-AD	21"x24"	0160M00015

**PERMANENT 1" FILTERS**

CHASSIS	PART#	SIZE
B	ALFH16201E	16.0" x 20.0"
C	ALFH1912201E	19.5" x 20.0"
D	ALFH20231E	23.0" x 20.0"

**SINGLE POINT WIRING KITS (SPW-01)**

MODEL	SPWK-B	SPWK-C	SPWK-D
HKTSD15XA	DMVE24BP1400B*	DMVE36CP1400B*	DMVE48DP1400B* DMVE60DP1400B*
HKTSD15XB			
HKTSD19CA		DMVE36CP1400B*	
HKTSD19CB			
HKTSD20DA			DMVE48DP1400B* DMVE60DP1400B*
HKTSD20DB			
HKTSD25DA			DMVE60DP1400B*
HKTSD25DB			