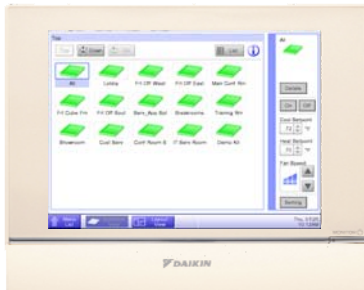


Date: June 5, 2014
To: Daikin Sales, Service, and Distribution
Subject: The intelligent Touch Manager (iTM) Version 2.0

Daikin is pleased to announce the release of its new software update for the intelligent Touch Manager (DCM601A71) with version 2.0.

The new iTM software version 2.0 will be released in late August 2013.



intelligent Touch Manager (iTM)
(DCM601A71)



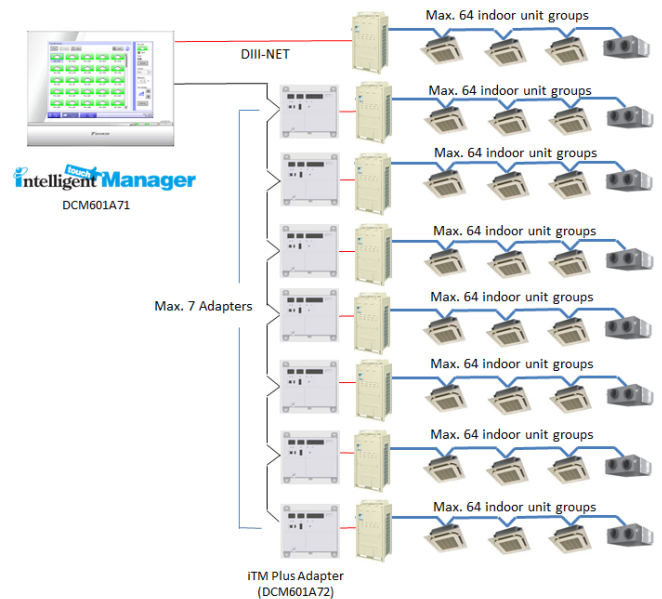
iTM Plus Adaptor
(DCM601A72)

The iTM has a 10.4" LCD touch screen, USB port, 100Mbps Ethernet port, and is capable of managing up to 512 indoor unit groups which can cover your project requirements. It is more powerful than the hardware capabilities of the intelligent Touch Controller (iTC) and the iTM comes with web access as a standard feature.



Monitor and control of campus environments made simple with a facility network connected PC

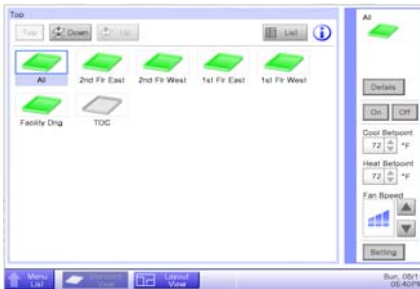
Operation, navigation, and commissioning of the iTM are very intuitive and can be done on or off site by touch screen, web access, and/or preset tool. Up to 60 floor layout views can be



Published by Daikin Product Marketing Department



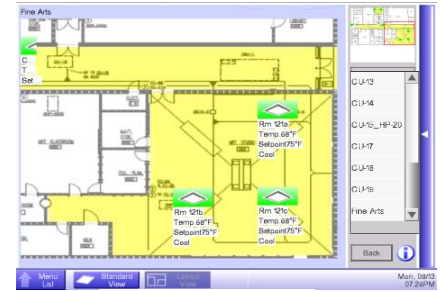
created to monitor and control each management point (indoor unit, digital input/output, and analog input/output groups).



Icon View



List View



Layout View

Easy navigation through menu functions with the new tab/icon display feature



Automatic Ctrl



System Settings



Operation Mgmt

The iTM v2.0 will have enhanced features such as: Auto-changeover (Fixed, Individual, Averaging, and Vote), Independent Cool and Heat Setpoints, Independent Setback Setpoints, Scheduling with Optimum Start, and Room Temperature display with 0.1°F resolution.

The iTM is the successor of the intelligent Manager III, and now it will be the successor of the intelligent Touch Controller (iTC).

The iTC will continue to be sold without the Web/Email option as a lower cost alternative Centralized Controller and for projects requiring the HTTP option.

The iTM v2.0 can be used as a backup controller to the BMS integration prior to and after the BMS system fully (or partially) monitors and/or controls the VRV system.

Published by Daikin Product Marketing Department



Our continuing commitment to quality products may mean a change in specifications without notice.
© 2013 **DAIKIN NORTH AMERICA LLC** • Houston, TX • USA • www.daikinac.com

Advanced Multi-zone Controller Comparison Table

		New Feature	Improved Feature		
			iTM V2.0	iTM V1.04	iTC V6.04
Hardware	1	Indoor Unit Capacity	Up to 64 – 512 Groups		Up to 64 – 128 Groups
	2	DIII-Net Adapter	up to 7 (64 indoor unit groups each)		1 (64 indoor unit groups)
	3	Total Mangement Points	650		128
	4	Dimensions (inches)	11.42 x 9.57 x 1.97		9.063 x 5.781 x 4.22
	5	Display Size (inches)	10.4		5.7
	6	Screen Saver	3 Types		N/A
	7	Installation	Wall / Flush mount (0.98 in.)		Wall / Flush mount (1.97 in.)
	8	External Memory	USB 2.0 (up to 32GB)		PCMCIA
	9	Di / Pi Inputs	1 Di and 3 Di / Pi		1 Di and 3 Pi
	10	Ethernet	100 Mbps		10 Mbps
Basic Items	11	Menu Navigation	Tab / Icon		Menu List
	12	Area / Zone / Indoor Unit Settings	Area / Indoor Unit		Zone / Indoor Unit
	13	Room Temp Resolution	0.1°F / 0.1°C	1°F / 0.1°C	1°F / 0.1°C
	14	Setpoint Resolution	1°F / 0.1°C	1°F / 0.1°C	1°F / 0.1°C
	15	Setpoint	Single / Dual	Single	Single / Dual
	16	Setpoint Tracking	✓ (Setpoint Tracking Mode for 0-7°F Differential)		✓ (0°F only)
	17	Setpoint Range Limitation	✓		✓
	18	Setback	Absolute	Relative	Absolute
	19	Recovery Temperature	0 - 10°F	0 - 10°F	0 - 10°F
	20	Remote Control Permit/Prohibit	✓		✓
Functions	21	Schedule	7, 5+2, 5+1+1, 1	7	7, 5+2, 5+1+1
	22	Events per day	20		8
	23	Optimal Start	✓	Available as pre-cool/heat doesn't work with Setback	N/A
	24	Timed Override	Timer Extension (adj. 30 - 180 minutes)		2 Hour Override (fixed)
	25	Layout View	✓		N/A
	26	Floor Plan Sections	60		N/A
	27	Auto-changeover	Fixed	Fixed / Operating	Fixed
	28		Individual		Individual
	29		Averaging (Weighted Demand)	Averaging	Averaging
	30		Vote (Weighted Demand)		
	31	Changeover Deadband	2°F (Minimum)	6°F	5.4°F
	32	Guard Timer	Adjustable (15 / 30 / 60 min)	Adjustable (15 / 30 / 60 / 90 min)	Adjustable (15 / 30 / 60 / 90 min)
	33	Interlock	✓		✓
	34	Emergency Stop	1 Default w/31 optional program settings		1 Default
Options	35	Web / Error Email Access	Standard		Option
	36	System Configuration via Web	✓		N/A
	37	PPD Option (tenant billing)	Option		Option
	38	HTTP Option	N/A		Option
	39	Di/Dio Unit Compatible	✓		✓
	40	WAGO I/O (Di/Do/Ai/Ao)	✓		N/A
Commissioning / Maintenance	41	Software ID Required for Startup (or activation key)	Not Needed		✓
	42	Automatic Adjustment for Daylight Savings Time (DST)	✓		✓
	43	Auto Registration	✓		N/A
	44	Presetting Tool	✓		N/A
	45	History	500,000		300
	46	D-NET	✓		✓

Published by Daikin Product Marketing Department



Our continuing commitment to quality products may mean a change in specifications without notice.
 © 2013 DAIKIN NORTH AMERICA LLC • Houston, TX • USA • www.daikinac.com

Line #	Feature Highlights
1	The indoor unit total capacity has been improved for the iTM with up to 512 indoor groups (1024 indoor units)
3	The iTM has increased the total number of management points to 650 versus 128 with the iTC
5	The iTM has an improved and much larger touch screen than the iTC (no stylis needed)
8	The iTM does away with the PCMCIA card and uses the USB Flash Drive to import and export data
10	Ethernet connection speed increased to 100 Mbps
11	The iTM has introduced simple menu navigation by using tabs and icons
12	The iTM now uses Area set up instread of Zones to allow hiearchy placement of indoor unit groups
13	The iTM can now display the room temperature in 0.1°F
16	Setpoint Tracking Mode has been added to the iTM to keep the differential between the Cool and Heat setpoints if needed. The iTC is only capable of maintaining a 0° differential
18	The Setback for the iTM has been improved to provide independent cool and heat setback setpoints
21/22	The weekly patterns has been improved to provide 4 types (7, 5+2, 5+1+1, 1)
23	Optimum Start has been added to the iTM scheduling as a new feature
24	The iTM has a new adjustable timed override (30, 60, 90, 120, 180 min) that allows use of the indoor unit during unoccupied periods
25/26	The iTM has Introduced Layout View Screens that allows the use of a building floor plan (up to 60 floor sections)
29	The iTM Auto-changeover (Fixed (default), Individual, Averaging, and Vote) has been enhance to include a new feature called Vote
29/30	Weighted Demand has been added as a new feature to the Auto-changeover modes (Averaging and Vote) to set the priority consideration for each indoor unit in the changeover group
31	iTM introduces a new Changeover Deadband incorporating an adjustable primary and secondary changeover deadband from setpoint. The same as th BRC1E72 (NAV) Auto-changeover
35	Web/Error Email is standard on the iTM
36	Sytem configuration and system changes can now be accomplished from the iTM Web access without the need to be onsite
40	The iTM introduces the WAGO I/O system that provide Di, Do, Ai, and Ao capabilities without using the DIII-Net addressing. This maximizes the number DIII-Net addressing that can be used for indoor unit group assignment
41	No software ID required for startup or Web/Error Email access
43	The iTM has introduced automatically detect DIII-Net addressed indoor unit and assigns the appropriate model type
44	Preset Tool provides offsite configuration of the iTM management point settings and Layout View
45	The iTM History has been increased from the iTC to 500,000 history items (Error, Control, Settings, and Status) saved

Products

Model	Description	Note
DCM601A71	intelligent Touch Manager	Controller with 10.4" LCD / Web Standard
DCM601A72	iTM Plus Adapter	Up to 7 adapter per iTM
DCM002A71	iTM PPD	Tenant billing software option

*The iTM Integrator (DCM601A73) and iTM Energy Navigator (DCM008A71) options are not currently available for the North American market.

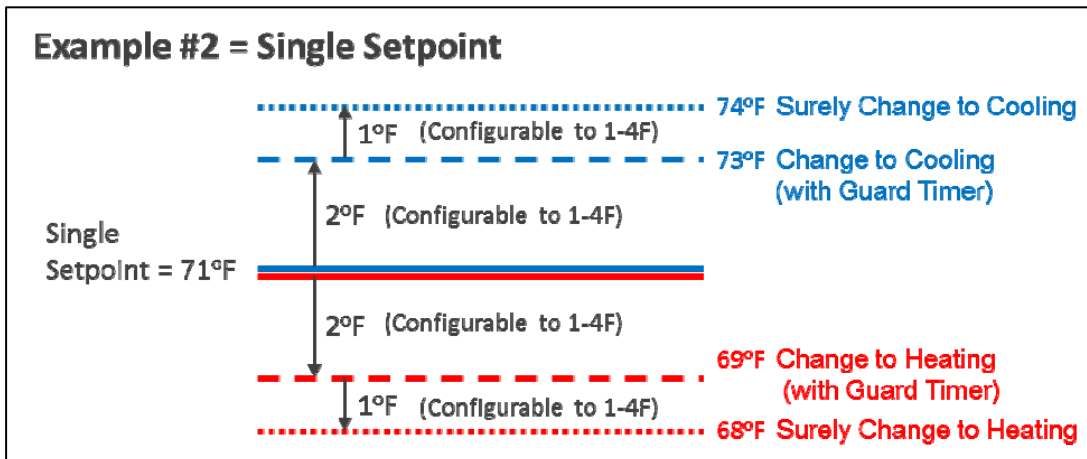
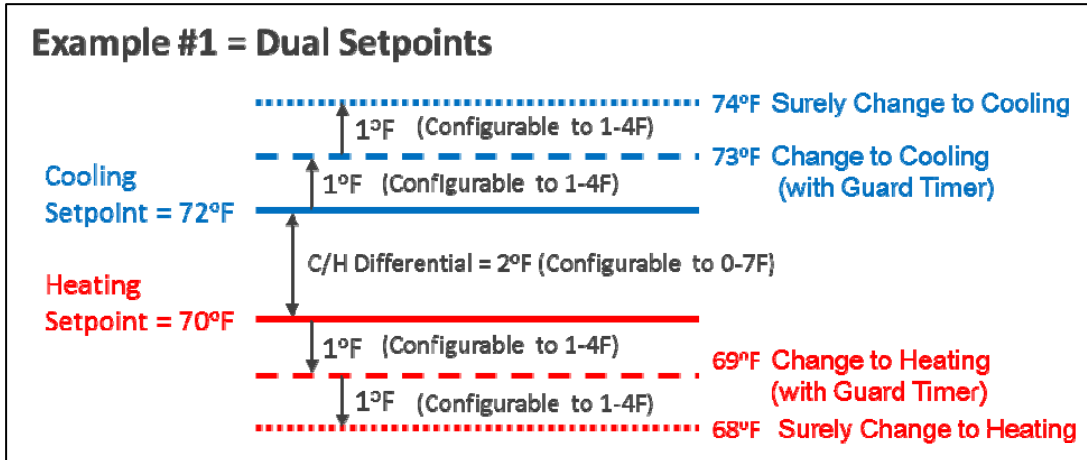
Published by Daikin Product Marketing Department



Our continuing commitment to quality products may mean a change in specifications without notice.
 © 2013 DAIKIN NORTH AMERICA LLC • Houston, TX • USA • www.daikinac.com

Auto-changeover

- Auto-changeover for Heat Recovery and Heat Pump systems with Dual/Single setpoints **Improved**
 - Primary Changeover deadbands (PCd)
 - Adjustable between 1 – 4°F (default of 2°F)
 - Guard timer
 - Secondary Changeover deadband (SCd)
 - Adjustable between 1 – 4°F (default of 1°F)
 - Ignores guard timer



- Enhanced Auto-changeover methods **Improved**
 - Individual, Fixed (default), Average, and Vote
 - Weighted Demand configuration for Average and Vote methods
 - The Vote Method allows users to configure the system changeover based upon Heat Override **New**
 - Ideal for Heat Pump or Heat Recovery systems where rooms may have varying loads

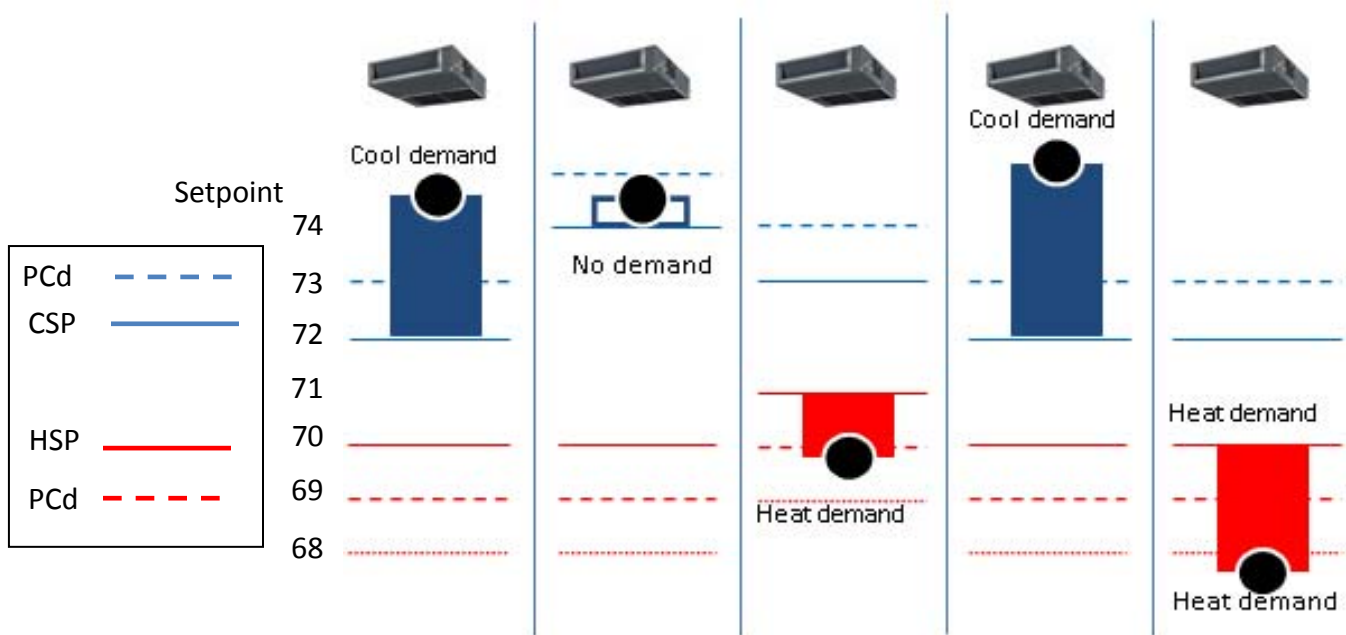
Published by Daikin Product Marketing Department



Vote Method

New

- Changeover is evaluated based upon total cooling demand and total heating demand. If the total cooling demand is greater than the heating (like the figure below), the iTM v2.0 changes the indoor units in the changeover groups to cooling mode.
- When the changeover group is in cool mode the total cooling demand will decreased, at that point the total heating demand may become greater than the cooling demand and change the mode to heating. (A guard timer applies.)
- The setpoints can be different in each indoor unit within the changeover group. The demand is calculated based on the setpoints in comparison to room temperature for each indoor unit. The demand within the Primary Changeover deadband (PCd) is considered as no demand.
 - A weight (0 to 3) can be configured for each indoor unit and is multiplied by the degree difference between the room temperature and setpoint to calculate the weighted demand
- Good for the Heat Pump systems (or under the BS Box with multiple indoor units connected to the same port in Heat Recovery system) as pseudo simultaneous cooling and heating operation.



* Option available for heating override if there is an indoor unit which the heating demand exceeds $(H_SP - (PCd + SCd))$

Published by Daikin Product Marketing Department



Our continuing commitment to quality products may mean a change in specifications without notice.
 © 2013 DAIKIN NORTH AMERICA LLC • Houston, TX • USA • www.daikinac.com

Building facilities management

- WAGO I/O system for management and controls of ancillary equipment by schedule, manual control, web access, or interlock
 - I/O configuration for Digital Input, Digital Output, Analog Input, and Analog Output
 - Up to 512 management points can be created



24 VDC
Power Supply
Unit



Connect



Bus Coupler



Di, Do, Ai,
End Module

	Item	Note	Model
Required	Daikin iTM Basic Kit	Power Supply Unit 24 VDC, Connector Module, Bus Coupler, End Module	51291052
Di	2 Channel Di Module		750-400
	4 Channel Di Module		750-432
Do	2 Channel Do Module		750-513/000-001
Ai	2 Channel Ai Module	4-20 mA	750-454
		±10 VDC	750-479
		20k Thermistor	750-461/020-000

Training

The following training classes are offered at Daikin training centers. Check the Daikin training schedule for class locations and times at www.daikinuniversity.com.

- Control Product and Application training class (with ITM) (Course Code: CPA008)
- iTM Commission training class (Course Code: ITM008)
 - Onsite training can be requested through the Daikin Training Department
- iTM Sales Training Webinar (Course Code: OITM01) is also available
 - Can be viewed on the Daikin training website at www.daikinuniversity.com.

Published by Daikin Product Marketing Department



Our continuing commitment to quality products may mean a change in specifications without notice.
© 2013 **DAIKIN NORTH AMERICA LLC** • Houston, TX • USA • www.daikinac.com

Documentation

Located on TRL/FTP site at: <ftp.daikinac.com/trl/ControlsDocuments>

- iTM User manual
- Installation manual for the iTM
- Installation manual for the iTM Plus Adapter
- Submittal Data Sheet
- iTM Guide Spec
- Sales presentation
- Introduction video
- FAQ

Tools

- TRL - iTM available in the product quotation design/commissioning package
- Xpress – The iTM is available under Controls tab for system design

Commissioning

The Commissioning of the iTM may only be performed by a technician who has been qualified to perform iTM commissioning. The qualification process will require that the candidate for qualification attend a formal iTM commissioning class. Upon completion of the class participants will be evaluated by the classroom instructor and based this evaluation may become qualified to commission the iTM. If prior approval is given from the Daikin Technical Service Department, qualification status may be granted during onsite iTM commissioning/training. Upon receiving qualification status, the Technical Service Department will provide the iTM Versionup Tool (software upgrade tool needed to upgrade the iTM to later software versions), iTM Presetting tool, and iTM commissioning manuals to the qualified personnel.

Individuals who do not attend a formal iTM commissioning qualification class or receive onsite training to gain qualification status to commission the iTM will not be provided the opportunity for Daikin Technical Service support during startup and commissioning of the iTM. Daikin Technical Service personnel will be available for travel onsite to commission the iTM (iTM commissioning fees will apply). The iTM Versionup Tool, iTM Presetting Tool, and iTM commissioning manuals will not be provided to those without the qualification status.

The Power Proportional Distribution (PPD) option commissioning will be carried out by Daikin Technical Service Personnel only. The iTM PPD Commissioning fees will apply.

Published by Daikin Product Marketing Department



Our continuing commitment to quality products may mean a change in specifications without notice.
© 2013 **DAIKIN NORTH AMERICA LLC** • Houston, TX • USA • www.daikinac.com

Commissioning Fee Schedule

intelligent Touch Manager Setup & Commissioning Fee			
#	Description	Part Number	List Price
1	Basic	DACA-ITMComm	\$1,210 list + (\$50 list x # of indoor unit groups)
2	Floor Layout Screen Option	DACA-ITMLSComm	\$500 list x # of Floor layout screens (up to 20 indoor units per layout screen)
3	PPD Option	DACA-ITMPPDComm	\$1,100 list + (\$30 list x # of indoor unit groups)
4	System integration		Charged by project requirement
5	Actual travel expenses	DACA-T&H	Default fee \$1,000 Continental US and default fee \$2,500 outside Continental US) and actual hotel expenses (default fee \$250/day Continental US and \$350/day outside Continental US) apply.

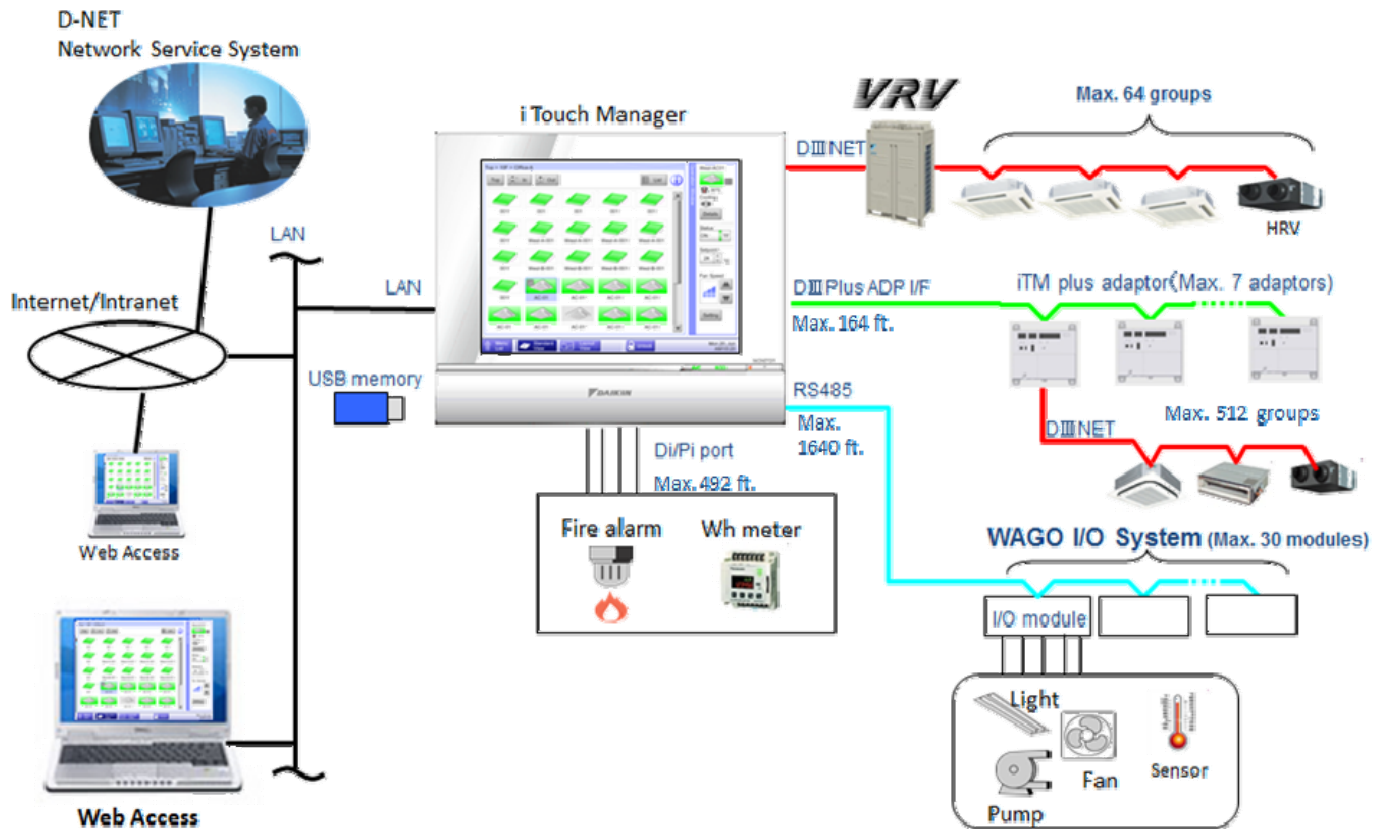
Upgrading

Upgrades on existing projects from version 1.0x to 2.0 will require a complete re-commissioning. Version 1.0x and 2.0 are not compatible, so no data created in the earlier version will be save when the version upgrade is completed.

Published by Daikin Product Marketing Department



System Overview



Specifications

		intelligent Touch Manager	iTM Plus Adpater
Model		DCM601A71	DCM601A72
Power supply		AC 24V 60 Hz	AC 24V 60 Hz
Power consumption		23W maximum	23W maximum
Operating conditions	Surrounding temperature	32°F–104°F	14°F – 122°F
	Humidity	15% - 85% RH (non condensing)	15% - 85% RH (non condensing)
Dimensions	H x W x D (inch)	11.42 x 9.57 x 1.97	5.87 x 6.30 x 2.41
Accessible units	Maximum number of Indoor Units	64 addressed Indoor Unit Groups (maximum 128 actual Indoor Units)	64 addressed Indoor Unit Groups (maximum 128 actual Indoor Units)
	Maximum number of Outdoor Units	10	10
Interfaces	F1F2 (Daikin DIII-NET communications)	1	1
	100Base-TX (Ethernet communication)	1 (RJ-45)	
	USB port (for flash memory drive)	1 (2GB to 32 GB)	
	RS485 (for DCM601A72 connection)	1 (2 wire polarity sensitive)	1 (2 wire polarity sensitive)
Input terminals	Di (Digital input for forced shutdown)	1	
	Di/Pi (Digital/Pulse input)*	3	4
EMC certification		FCC Part 15 Class B	FCC Part 15 Class B

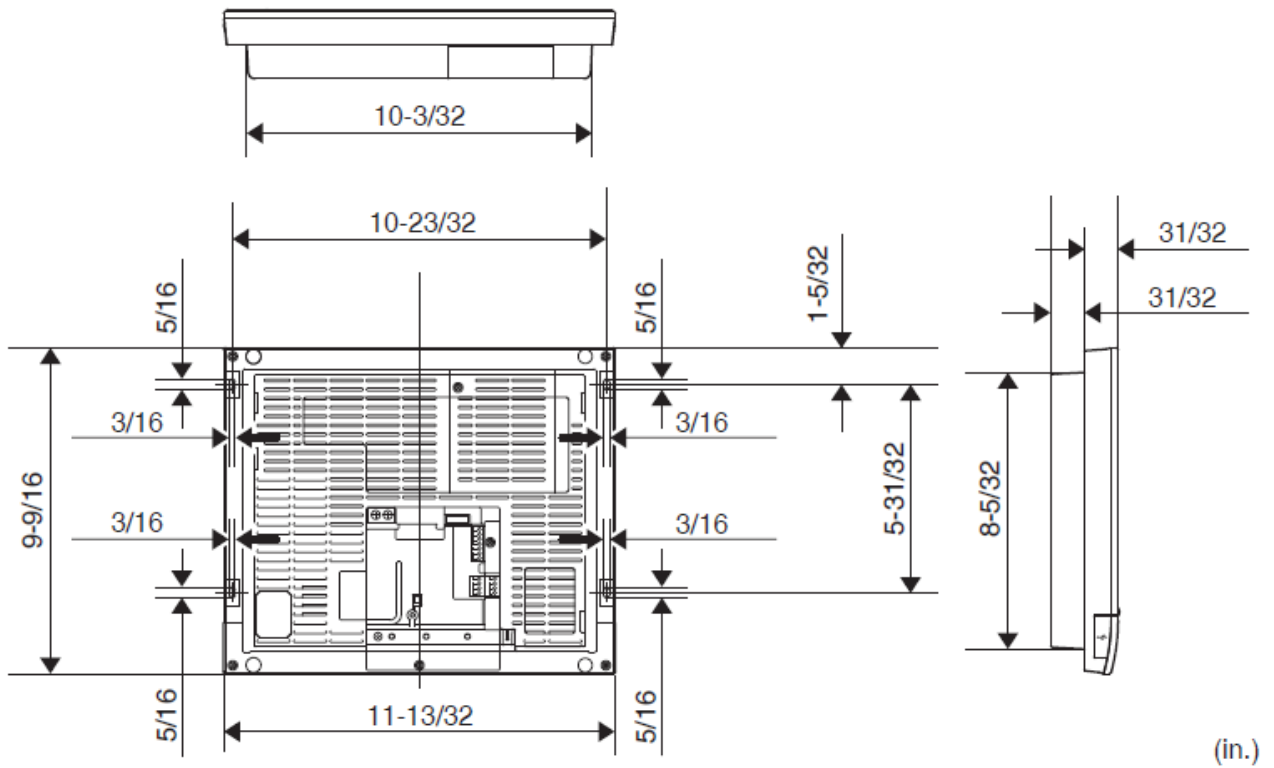
Published by Daikin Product Marketing Department



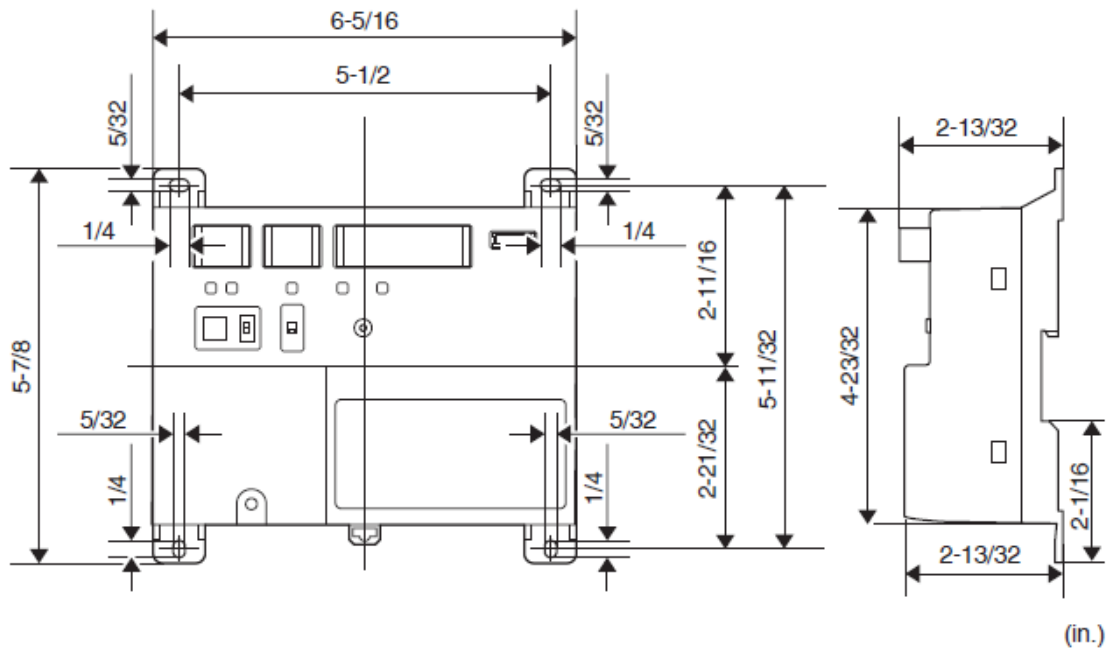
Our continuing commitment to quality products may mean a change in specifications without notice.
 © 2013 **DAIKIN NORTH AMERICA LLC** • Houston, TX • USA • www.daikinac.com

Dimensions

iTM



iTM Plus Adapter



Published by Daikin Product Marketing Department



Our continuing commitment to quality products may mean a change in specifications without notice.
© 2013 **DAIKIN NORTH AMERICA LLC** • Houston, TX • USA • www.daikinac.com